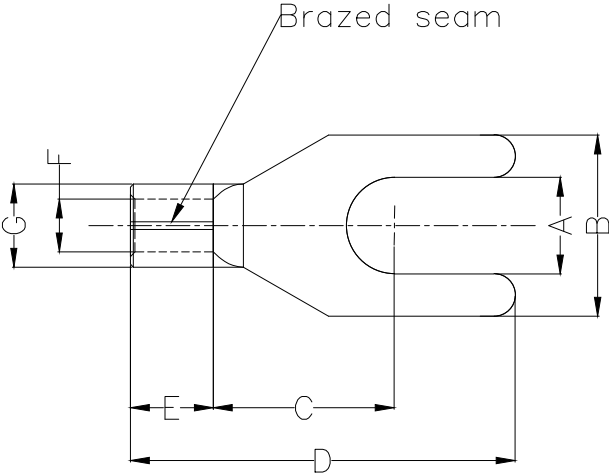
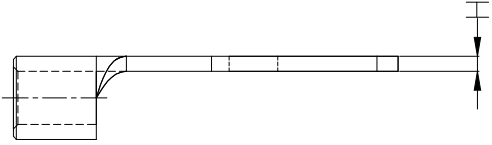


1 2 3 4 5 6 7 8

REV	LOCATIONS	DESCRIPTION	DATE	REVISER	APPD

Notes:

Material: Copper  
 Plating: Matte tin plated  
 Wire range: 2.5~4mm<sup>2</sup> / (14~12AWG)  
 Applicable screw: #8 UNC  
 Max current: 37A



PART NO.	Dimensions							
	A	B	C	D	E	F	G	H
FYT01-003500400BON2	±0.3	±0.5	±1	±1	±1	±0.5	±0.5	±0.05
	4.3	8.0	7.7	18.3	6.0	3.0	5.0	1.0

<p>THIRD ANGLE PROJECTION</p>	GENERAL TOLERANCES (UNLESS SPECIFIED)		APPROVE BY	DATE	PART NO.	ITEM NO.	<p>Building Technology Cornerstone</p>
	X. ±0.30	X.* ±5'	LEO	10/JAN/21	FYT01-003500400BON2	FYT01	
	X.X ±0.20	X.X' ±2'	CHECKED BY	DATE	TITLE		
	X.XX ±0.15	X.XX' ±1'	GISELLE	10/JAN/21	Spade tongue terminal		
SCALE	SIZE	X.PYD ±0.10	X.PYD' ±0.5'	DRAWN BY	DATE	THIS DRAWING CONTAINS INFORMATION THAT IS PROPRIETARY TO TXGA INDUSTRIAL ELECTRONICS(S.Z)CO.,LTD AND SHOULD NOT BE USED WITHOUT WRITTEN PERMISSION	
5:1	A4			PYD	10/JAN/21	REV 0	SHEET NO. 1/1

1 2 3 4 5 6 7 8